



CDS vacuum dispersion system

Modular vacuum system for DISPERMAT® dissolvers
Option: single-walled or double-walled container holder

The dispersing process can be observed through the large glass cover (CDS 250 to CDS 5000). [D]

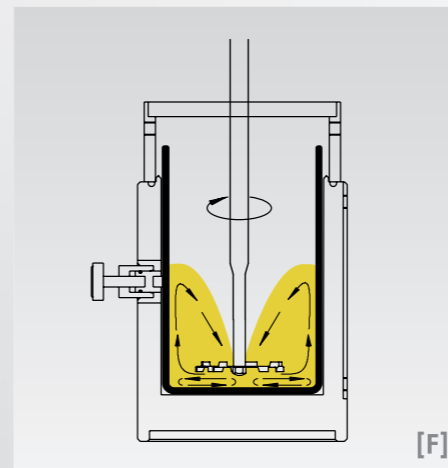
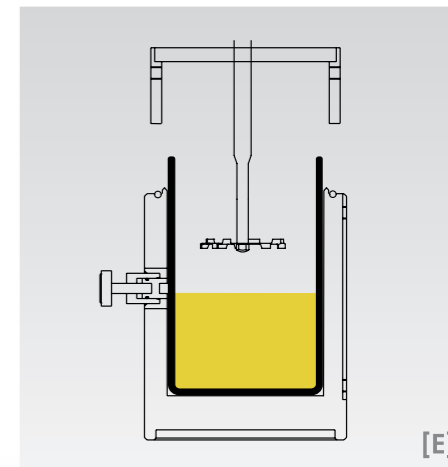
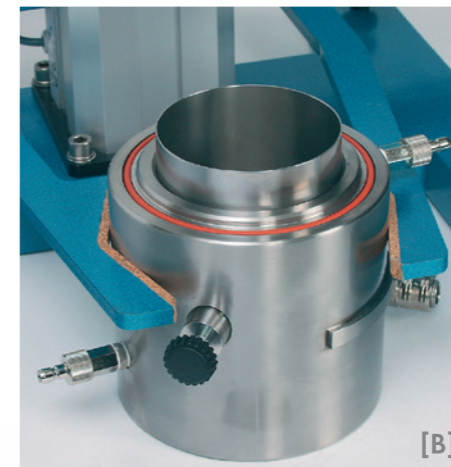
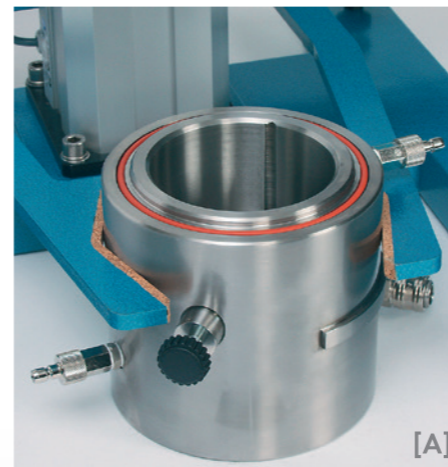
The CDS 10000 to CDS 25000 vacuum systems have an aluminium cover with a large inspection glass.

The CDS systems 250 to 5000 are available with a single or double-walled (temperature-controlled) container holder. [A] From the CDS 10000 vacuum system single or double-walled containers with an aluminium cover are used.

The CDS vacuum system is compatible with the DISPERMAT® quick action coupling system.

The container holder is aligned centrally and fixed safely by the container clamping device. [A]

DISPERMAT® CA40 with the CDS 500 vacuum system



Dispersion under vacuum with the modular CDS dispersion system

The CDS dispersion system enables the dispersion process to be carried out in single-walled containers in a closed system under vacuum. The single-walled containers are placed into the container holder and secured in place. If the dispersion process needs to be cooled a double-walled container holder is available. After the liquid and powder components have been added, the glass cover can be lowered onto the container holder over the vacuum shaft guide tube. The actual dispersion process can now be run and the product is set into a turbulence free rolling motion.

If vacuum is required the vacuum pump can be switched on. The impeller height can easily be raised or lowered during the dispersion process even under vacuum. The dispersion process can be observed clearly through the large glass cover.

The CDS system can be equipped with a particularly bright LED light as well as an integrated infrared temperature measurement system.

CDS vacuum system type	Container capacity, litre	Container size Ø x height, mm	Product volume litre	Recommended DISPERMAT® dissolvers type
Single- or double-walled holder with a glass cover				
CDS 250	0.25	65 x 85	0.1 - 0.2	LC55 - LC220-6 CV-PLUS CN10 - CN40 CA AE01 - AE06 LC-EX AE01-EX - AE06-EX R30 R11
CDS 500	0.5	80 x 100	0.2 - 0.3	
CDS 1000	1	100 x 130	0.3 - 0.7	
CDS 2000	2	120 x 180	0.6 - 1.4	LC110-06 - LC220-6 CV4-PLUS CN10 - CN40 CA40 - CA60 AE01 - AE06 LC75-EX AE01-EX - AE06-EX R11
CDS 3000	3	140 x 200	0.9 - 2.1	LC110-12 - LC220-6 CV4-PLUS CN10 - CN80 CA - CA60 AE01 - AE06 AE01-EX - AE06-EX R11
CDS 5000	5	180 x 200	1.5 - 3.5	LC110-12 - LC220-6 CN CA - CA60 AE01 - AE06 AE01-EX - AE06-EX R11
Single- or double-walled containers with an aluminium cover				
CDS 10000	10	240 x 240	3 - 7	LC110-12 - LC220-06 CN CA40 - CA60 AE AE-EX R11
CDS 20000	20	280 x 280	6 - 14	LC110-12 - LC220-06 CN CA60 AE03 - AE14 AE03-EX - AE13-EX
CDS 25000	25	320 x 320	8 - 18	LC220-6 CN40 - CN120 AE06 - AE14 AE06-EX - AE13-EX